



THE HOUND DOG REGATTA

AUGUST 12 - 13TH, 2017

ORGANIZING AUTHORITY: GRAND TRAVERSE YACHT CLUB FRESHWATER CUP DIVISION SAILING INSTRUCTIONS

1 – Rules –

1.1 - The regatta will be governed by the rules as defined in The Racing Rules of Sailing (RRS), PHRF and one design class rules except as modified by these Sailing Instructions.

1.2 - The following rules are changed -

- a) Race Signal AP is changed in SI 4.2.
- b) RRS App A is changed in SI 10.2 and in SI 16.

2 – Notices to Competitors – will be posted on the Official Notice Board located in the GTYC hallway.

3 – Changes To Sailing Instructions – will be posted ninety (90) minutes prior to the first warning signal on the day it will take effect, except that any change to the schedule of races will be posted by 1900 hrs on the day before it will take effect.

4 – Signals Made Ashore –

4.1 - Signals made ashore will be displayed from the GTYC flagstaff and broadcast on VHF channel 69.

4.2 - When flag AP is displayed ashore, '1 minute' is replaced with 'not less than sixty (60) minutes' in Race Signal AP. This changes Race Signal AP.

5 – Schedule of Races –

Saturday, August 12

1100, Competitor Meeting, GTYC

1230 hrs, 1st Warning Signal, additional races follow back to back

Sunday, August 13

1030 hrs, 1st Warning Signal - 1030 hrs, no warning past 1400 hrs

6 – Class Flags

Melges Class: Victor (Red/White)

PHRF 1: Blue

PHRF 2: Red

7 — Racing Area — will be West Grand Traverse Bay. (see Attachment A)

8 — The Courses —

For all courses marks shall be left to port except the finish mark for courses 4W, and 5T.

Weather offset marks and leeward gates will NOT be used.

3W — Three(3) Leg W/L (windward, leeward, windward)

4W — Four(4) Leg W/L (windward, leeward, windward, leeward)

5W — Five(5) Leg W/L (windward, leeward, windward, leeward, windward)

4T — Four(4) Leg Triangle (triangle, windward).

5T — Five(5) Leg Triangle (triangle, windward, leeward).

O — Olympic Triangle (triangle, windward, leeward, windward).

8.1 — The courses will be displayed on a whiteboard on the transom of the signal boat. The course will be broadcast on VHF 69 as a courtesy.

9 — Marks —

9.1 - Courses 3W, 4W, 5W, 4T, 5T, & O — Primary marks will be large orange inflatable pins.

9.2 - New marks, as provided in SI 12, will be yellow inflatable pins.

10 — The Start —

10.1 — The starting line will be between a staff displaying an orange flag on the RC signal boat displaying a blue RC flag at the starboard end and the leeward mark at the port end.

10.2 — A boat starting later than five (5) minutes after her starting signal will be scored *Did Not Start (DNS)*. This changes RRS A4.1

10.3 — Boats whose warning signal has not been made shall avoid the starting area while others are in sequence.

11 — Recalls — Individual Recalls will be signaled in accordance with RRS 29.1. The RC intends to make an attempt to hail OCS competitors on VHF channel 69. The following are not grounds for redress: failure of the RC to hail any or all boats; failure of the RC to accurately hail one or more boats; failure of a boat to hear its hail; timeliness of the hail; or the order of boats within the hail.

12 — Change of the Next Leg of the Course — To change the next leg of the course, the RC will lay a new mark and remove the original as soon as practicable. When in a subsequent change a new mark is replaced, it will be replaced by an original mark.

13 — The Finish

13.1 - For courses 3W, 5W, 4T, O - the finishing line will be between a staff displaying an Orange Flag on a RC Boat at the Starboard end and the course side of the nearby Weather Mark at the Port end.

13.2 - For courses 4W & 5T - the finishing line will be between a staff displaying an Orange Flag on a RC Boat at the Port end and the course side of the nearby Leeward Mark at the Starboard end.

13.3 - In the absence of an RC boat at the finish, boats shall take their own times when their bow crosses a line perpendicular to the last leg and within 50 yds of the finish mark and report this time on the Finish Time Sheets attached.

14 — Time Limits — are as follows —

14.1 - For all courses the time limit for the first boat to finish will be ninety (90) minutes.

14.2 - For all courses any boat failing to finish within thirty (30) minutes after the first boat in their fleet sails the course and finishes will be scored Did Not Finish (DNF).

15 — Protests And Requests For Redress —

15.1 — Protests shall be filed within the protest time limit at GTYC where forms will be available.

15.2 — The protest time limit will be 60 minutes after the RC (Blue Flag) Signal Boat docks. This time will be posted on the Official Notice Board and will be announced on VHF Channel 69.

15.3 — Notices will be posted within thirty (30) minutes of the protest time limit to inform competitors of hearings in which they are parties or named as witnesses. Location of hearings TBD.

16 — Scoring —

16.1 — All races will be scored using PHRF Time On Time Handicaps. Entrants that do not have a valid LMPHRF certificate will be assigned a rating.

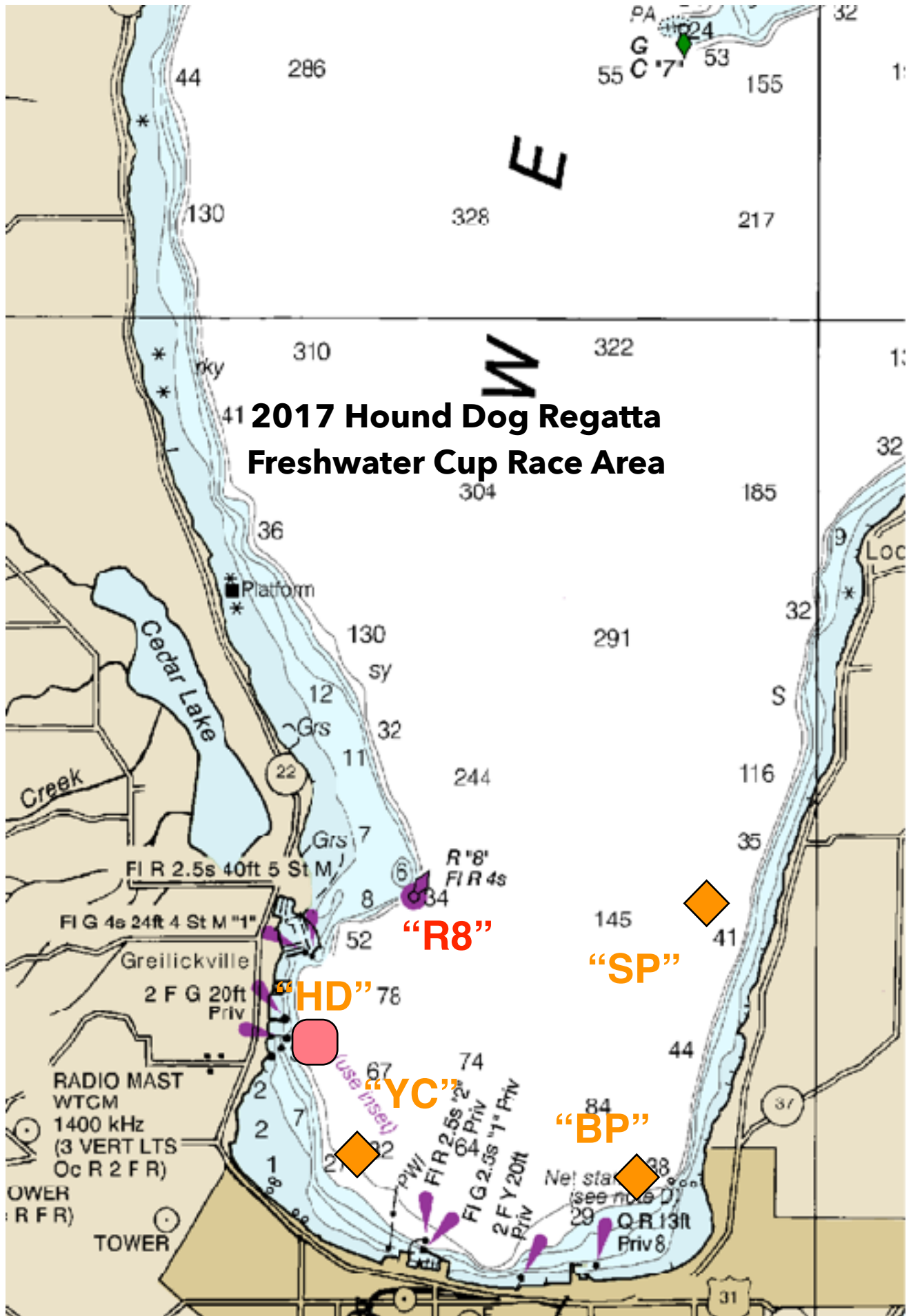
16.2 — A maximum of seven races are planned and one race must be completed to constitute a series.

16.3 — A boat's series score will be the total of her race scores (no throwout). This changes RRS App A.

16.4 — Any boat that does not finish (DNF) or retires after finishing (RET) will be scored one more point than the last boat to finish in that race. This changes RRS App A4.2.

17 — Prizes — will be awarded to first, second, & third place overall for each fleet.

18 — Disclaimer Of Liability — Competitors participate in the regatta entirely at their own risk. See RRS 4, Decision to Race. The organizing authority will not accept any liability for material damage or personal injury or death sustained in conjunction with or prior to, during, or after the regatta.



2017 GTYC Annual Regatta — Finish Time Sheet, FWC Race #1

Boat Name: _____ Section: _____

Finish Time: _____ (Official GPS Time)

Boat Ahead: _____

Boat Behind: _____

2017 GTYC Annual Regatta — Finish Time Sheet, FWC Race #2

Boat Name: _____ Section: _____

Finish Time: _____ (Official GPS Time)

Boat Ahead: _____

Boat Behind: _____

2017 GTYC Annual Regatta — Finish Time Sheet, FWC Race #3

Boat Name: _____ Section: _____

Finish Time: _____ (Official GPS Time)

Boat Ahead: _____

Boat Behind: _____

2017 GTYC Annual Regatta — Finish Time Sheet, FWC Race #4

Boat Name: _____ Section: _____

Finish Time: _____ (Official GPS Time)

Boat Ahead: _____

Boat Behind: _____

2017 GTYC Annual Regatta — Finish Time Sheet, FWC Race #5

Boat Name: _____ Section: _____

Finish Time: _____ (Official GPS Time)

Boat Ahead: _____

Boat Behind: _____

2017 GTYC Annual Regatta — Finish Time Sheet, FWC Race #6

Boat Name: _____ Section: _____

Finish Time: _____ (Official GPS Time)

Boat Ahead: _____

Boat Behind: _____

2017 GTYC Annual Regatta – Finish Time Sheet, FWC Race #7

Boat Name: _____ Section: _____

Finish Time: _____ (Official GPS Time)

Boat Ahead: _____

Boat Behind: _____